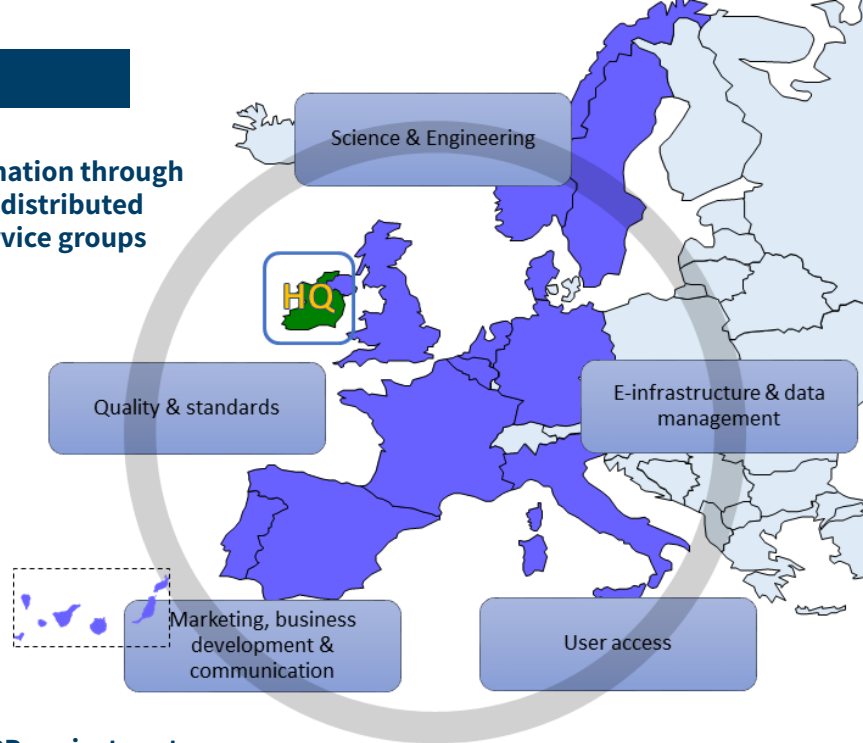


## What is a DRI?

Shared coordination through a central HQ & distributed specialised service groups



## MARINERG-i\_PP project partners



## MARINERG-i needs feedback!



We are currently gathering feedback from potential users in a survey to assess the key scientific challenges facing the industry & current and future market trends.

### By participating, you will inform:

- > Our common science plan
- > The focus of future test programmes
- > The infrastructure development plan
- > The services we will offer

## Call to action for potential users

## Keep in touch!

@marinergi1

marinergi-i

Website: [www.marinergi.eu](http://www.marinergi.eu)

Email: [marinergi@ucc.ie](mailto:marinergi@ucc.ie)



Marine Renewable Energy Distributed Research Infrastructure - Preparatory Phase

## A European Distributed Research Infrastructure for Offshore Renewable Energy



Funded by the European Union

## What is MARINERG-i?

Offshore Renewable Energy (ORE) is crucial for sustainable energy. MARINERG-i, a new Distributed Research Infrastructure (DRI) of testing facilities, aims to accelerate development of the ORE sector.

Building on past projects like MaRINET and MaRINET2, MARINERG-i will provide long-term, integrated support to deliver joint research for improving the quality of testing outcomes, a functional network, and a high demand access programme. Recognised by the EU and funded by Horizon Europe, the MARINERG-i\_PP project (2023-2026) will complete the preparation phase work necessary to formally establish a European Research Infrastructure Consortium (ERIC) to offer services.

## What will MARINERG-i do?



### Access

Provide access to ORE test facilities across Europe through funded research programmes and commercial testing.



### E-infrastructure

Provide a one-stop shop to access information, services & facilitate and mediate access to curated data archives; knowledge resources; and analytical tools.



### Standards & Quality

Establish best practices and common standards, ensuring the quality of facilities & consistency and comparability of results between centres.



### Scientific Community

Augment existing knowledge and grow expertise, producing a common science plan and training programmes for facilities and users.



### Planning & Efficiency

Promote operational and strategic planning and efficiency to make best use of infrastructures and target research that will accelerate the development of the ORE industry.



## What is the added-value?

“Our vision is to ensure that the DRI will accelerate the research, development and deployment of offshore wind, wave and tidal and combined energy technologies and maintain Europe as a global leader in this industry”

Project Coordinator  
Jimmy Murphy, MaREI Centre, University College Cork

- Streamlined services tailored to end user requirements
- Standardisation—improved quality of service and reduced risk
- Increased investor confidence, funding, faster commercialisation & supply-chain development
- Collaboration, expanding capacities of individual facilities and fostering strategic specialisation
- Improved efficiency & optimised resources
- Integrated knowledge centre, driving innovation & informing policy